



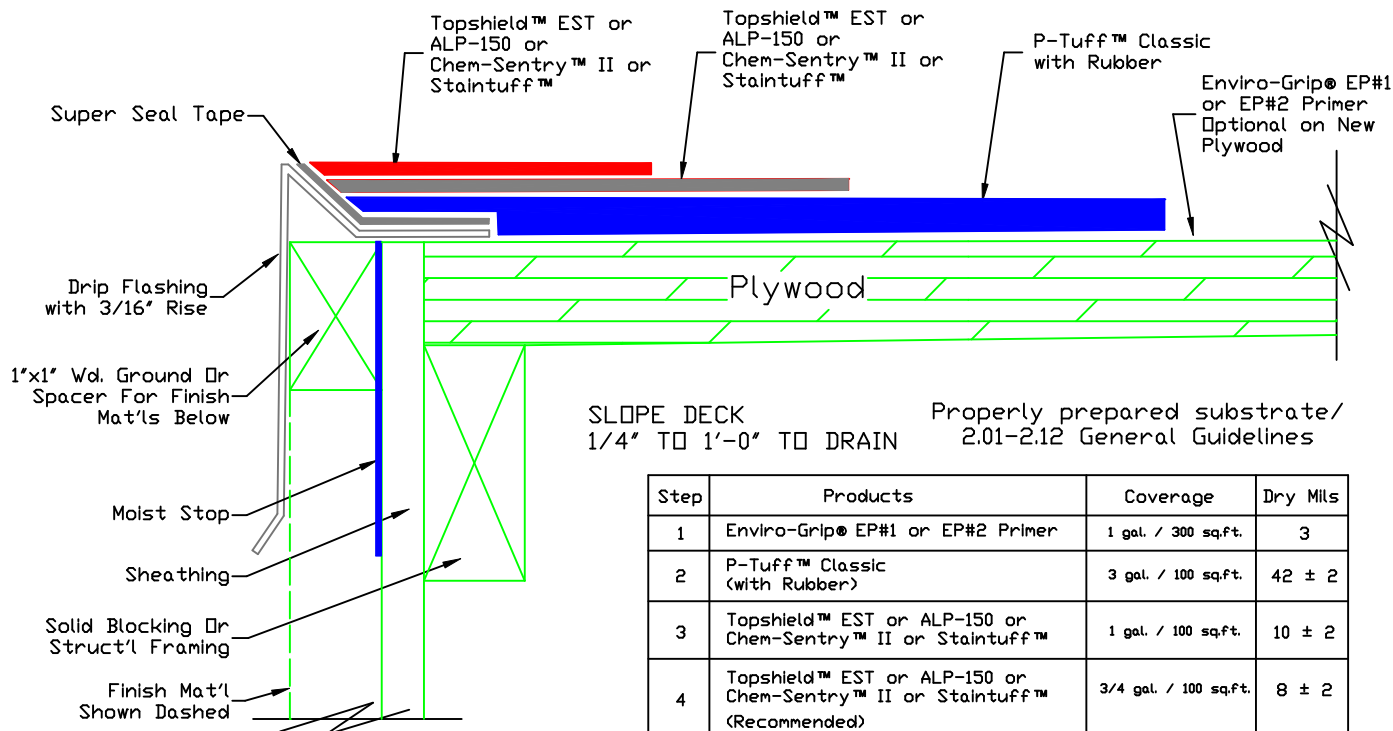
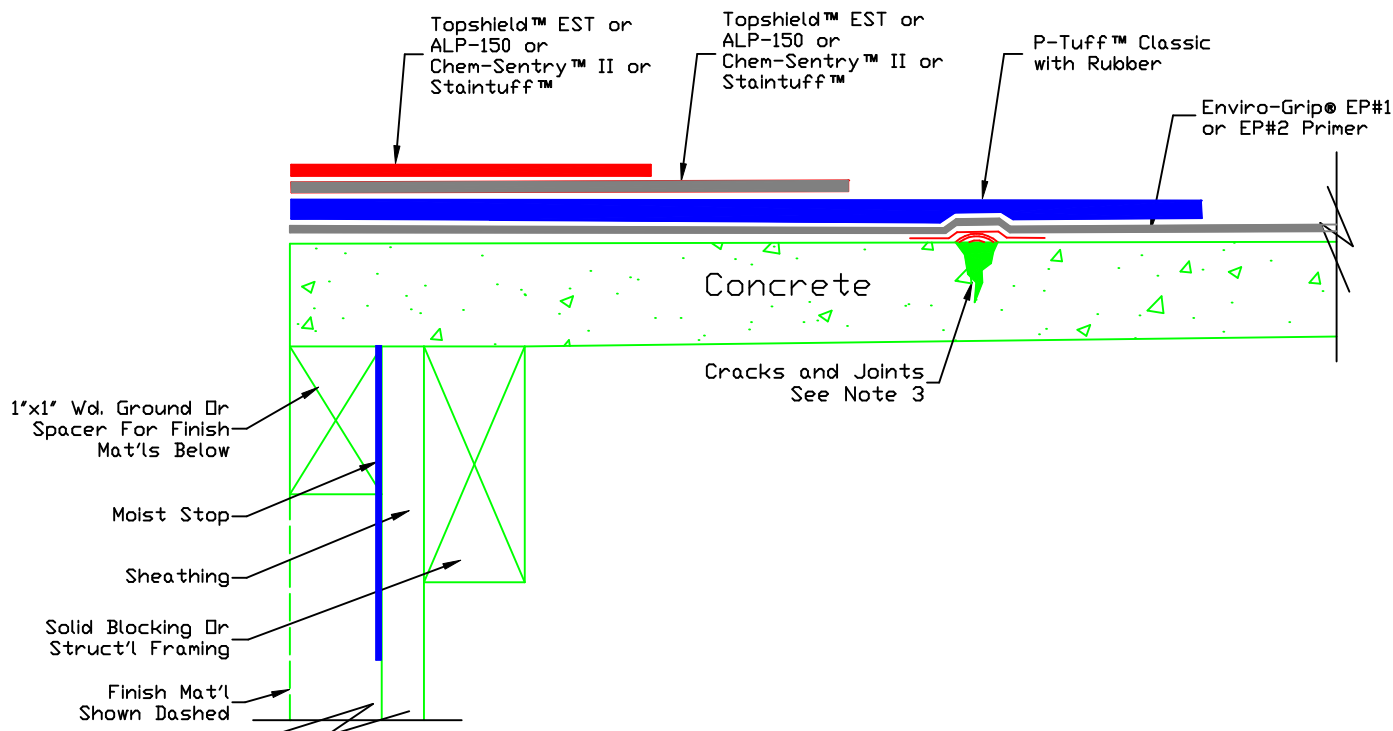
2250 E. Tropicana Ave  
Suite 19-600  
Las Vegas, NV 89119

Phone: (866) 977-8833  
Fax: (800) 804-0182  
Email: [sales@polytuffus.com](mailto:sales@polytuffus.com)

Web: [www.polytuffus.com](http://www.polytuffus.com)

# FLEXIDECK™ P-WD

55 Dry Mills Water Curable, Fast Cure  
Walking Deck Coating System for  
Plywood, Concrete and Metal Surfaces



SLOPE DECK 1/4" TO 1'-0" TO DRAIN Properly prepared substrate/ 2.01-2.12 General Guidelines

Step	Products	Coverage	Dry Mills
1	Enviro-Grip® EP#1 or EP#2 Primer	1 gal. / 300 sq.ft.	3
2	P-Tuff™ Classic (with Rubber)	3 gal. / 100 sq.ft.	42 ± 2
3	Topshield™ EST or ALP-150 or Chem-Sentry™ II or Staintuff™	1 gal. / 100 sq.ft.	10 ± 2
4	Topshield™ EST or ALP-150 or Chem-Sentry™ II or Staintuff™ (Recommended)	3/4 gal. / 100 sq.ft.	8 ± 2

Notes:  
1. P-Tuff™ Base Material is a mixture of 4 part P-Tuff™ Classic, SLV, or Flex and 1 part of water by volume.  
2. Repair Crack and Joints 2.09-2.12 General Guidelines

NOT TO SCALE Rev. 6-11-2009