



2250 E. Tropicana Ave  
Suite 19-600  
Las Vegas, NV 89119

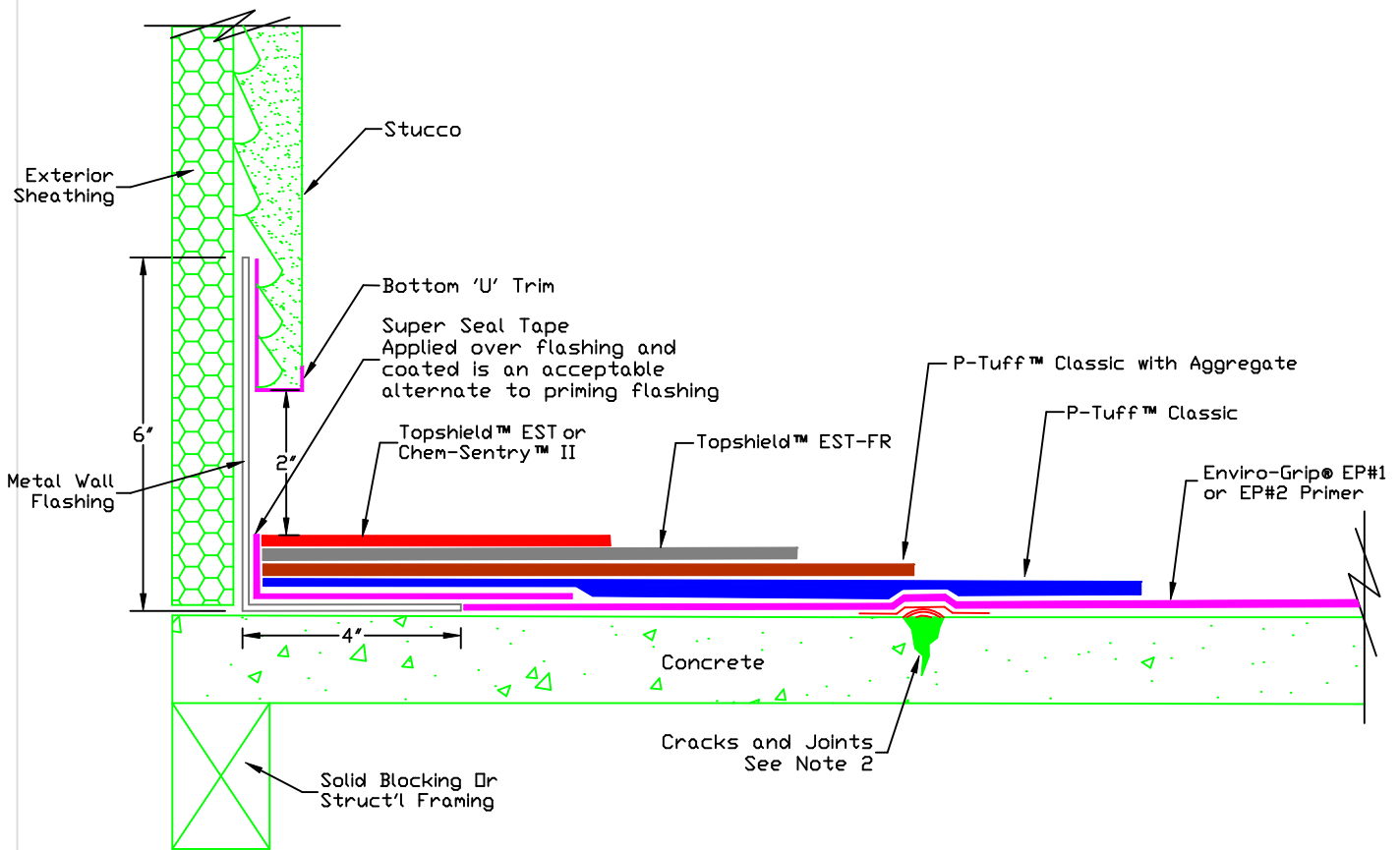
Phone: (866) 977-8833  
Fax: (800) 804-0182  
Email: [sales@polytuffus.com](mailto:sales@polytuffus.com)

Web: [www.polytuffus.com](http://www.polytuffus.com)

**FLEXIDECK™ P-A**

ICC-ES #4789

Class A Fire Rated System  
for 3/4" Plywood or Concrete



SLOPE DECK Properly prepared substrate/  
1/4" TO 1'-0" TO DRAIN 2.01-2.12 General Guidelines

Step	Products	Coverage	Dry Mils
1	Enviro-Grip® EP#1 or EP#2 Primer	1 gal. / 300 sq.ft.	3
2	P-Tuff™ Classic	3 gal. / 100 sq.ft.	42 ± 2
3	P-Tuff™ Classic (with Aggregate)	1 gal. / 100 sq.ft.	14 ± 2
4	Topshield™ EST-FR	1 1/4 gal. / 100 sq.ft.	13 ± 2
5	Topshield™ EST or Chem-Sentry™ II	3/4 gal. / 100 sq.ft. 1/2 gal. / 100 sq.ft.	8 ± 2 5 ± 2

- Notes:
1. P-Tuff™ base material is a mixture of 4 part P-Tuff™ Classic, SLV, or Flex and 1 part of water by volume.
  2. The ICC-ES # and Fire Rating
  3. Repair Crack and Joints 2.09-2.12 General Guidelines

NOT TO SCALE