



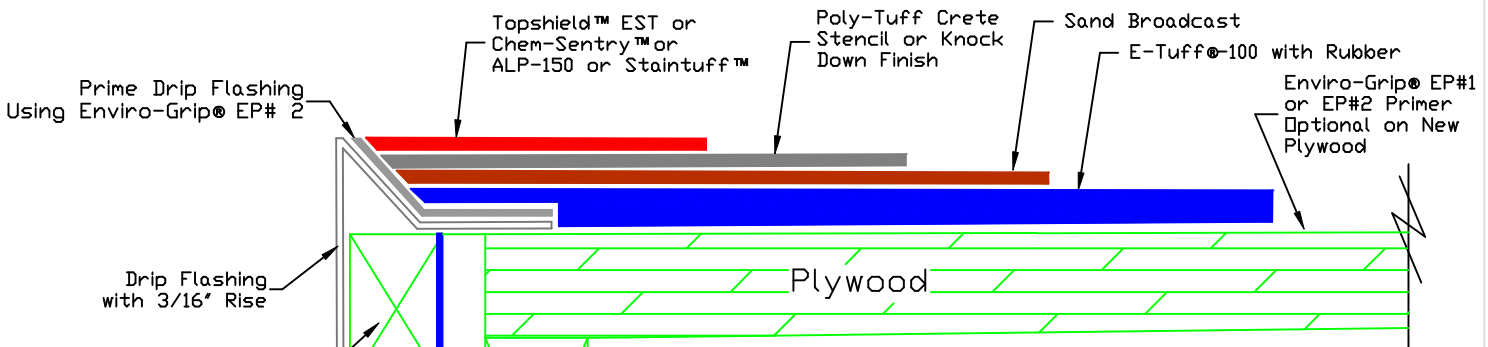
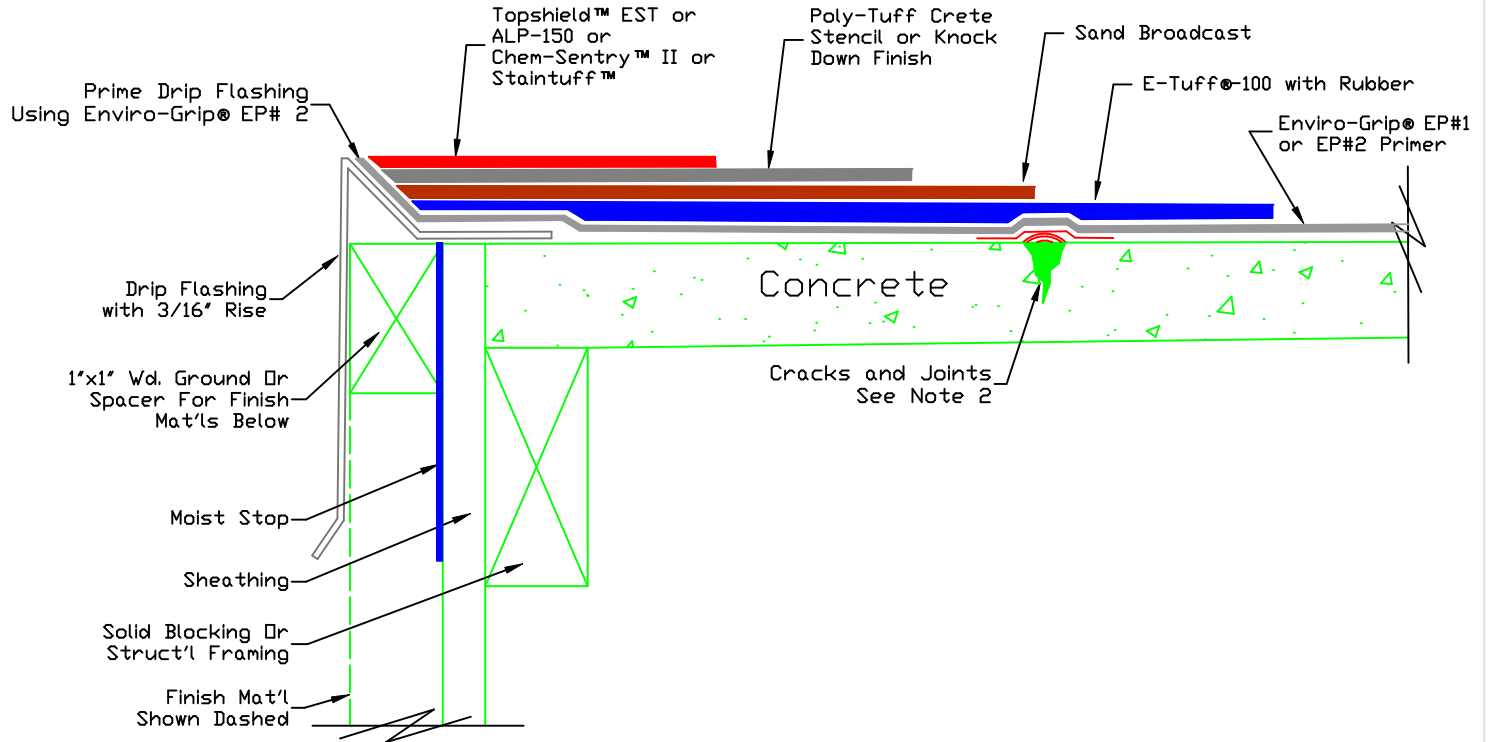
2250 E. Tropicana Ave
Suite 19-600
Las Vegas, NV 89119

Phone: (866) 977-8833
Fax: (800) 804-0182
Email: sales@polytuffus.com

Web: www.polytuffus.com

FLEXIDECK™ E-WD (A)

*55 Dry Mills Water Curable, Fast Cure
Walking Deck Coating System for
Plywood, Concrete and Metal Surfaces*



SLOPE DECK Properly prepared substrate/
1/4" TO 1'-0" TO DRAIN 2.01-2.12 General Guidelines

Step	Products	Coverage	Dry Mills
1	Enviro-Grip® EP#1 or EP#2 Primer	1 gal. / 300 sq.ft.	3
2	E-Tuff®-100 (with Rubber)	3 gal. / 100 sq.ft.	42 ± 2
3	Sand Broadcast	.	.
5	Poly-Tuff Crete Stencil or Knock Down Finish	1 gal. / 100 sq.ft.	10 ± 2
6	Topshield™ EST or ALP-150 or Chem-Sentry™ II or Staintuff™ (Recommended)	3/4 gal. / 100 sq.ft.	8 ± 2

Notes: 1. E-Tuff®-100 Base Material is a mixture of 4 part E-Tuff®-100 and 1 part of water by volume.
2. Repair Crack and Joints 2.09-2.12 General Guidelines

NOT TO SCALE