



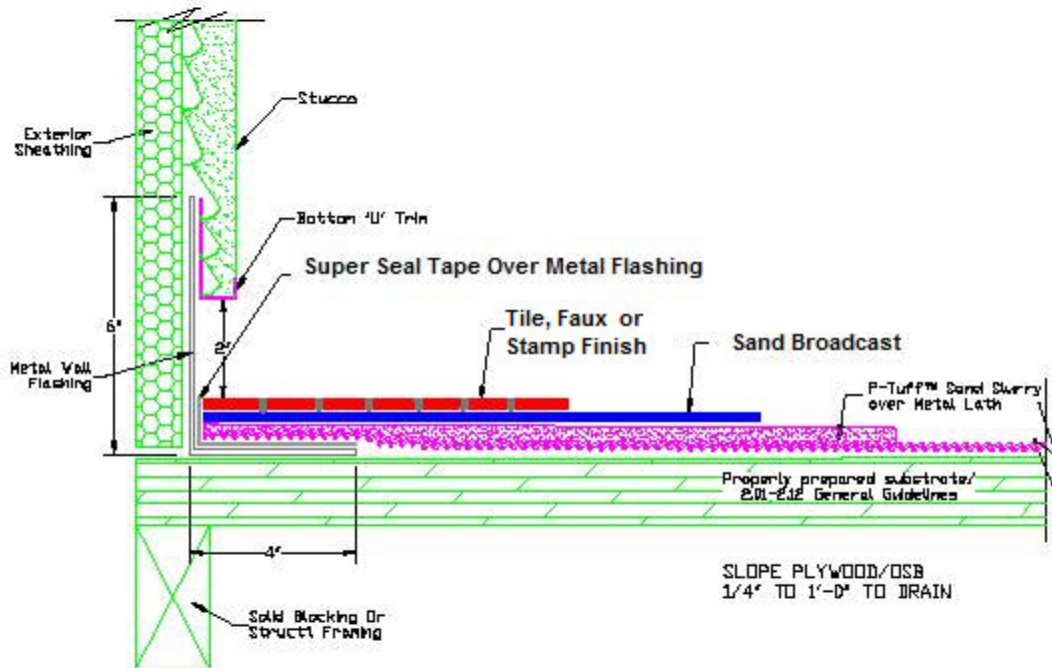
2890 E. Trophane Ave  
 Suite 18-800  
 Las Vegas, NV 89119

Phone: (888) 677-8888  
 Fax: (800) 264-0182  
 Email: sales@rockts.com

Web: [www.polytuff.com](http://www.polytuff.com)

# FLEXIDECK™ P-ML

Heavy Duty Metal Lath Reinforced  
 Decking System  
 for Wood Substrates



Step	Products	Coverage	Dry Mix
1	Metal Lath		
2	P-Tuff™ Sand Slurry (over Metal Lath)	8 gal / 100 sq ft	89 ± 2
4	Topseal™ EST or ALP-150 or Chen-Sentry™ II or Stakstuff™	1 1/4 gal / 100 sq ft	13 ± 2
5	Topseal™ EST or ALP-150 or Chen-Sentry™ II or Stakstuff™	3/4 gal / 100 sq ft	6 ± 2

- Notes: 1. P-Tuff™ Base Material is a mixture of 4 part P-Tuff™ Classic, SLV, or Flex and 1 part of water by volume.  
 2. The ICC-ES # and Fire Rating  
 3. Repair Crack and Joints E.09-E.12 General Guidelines

NOT TO SCALE