



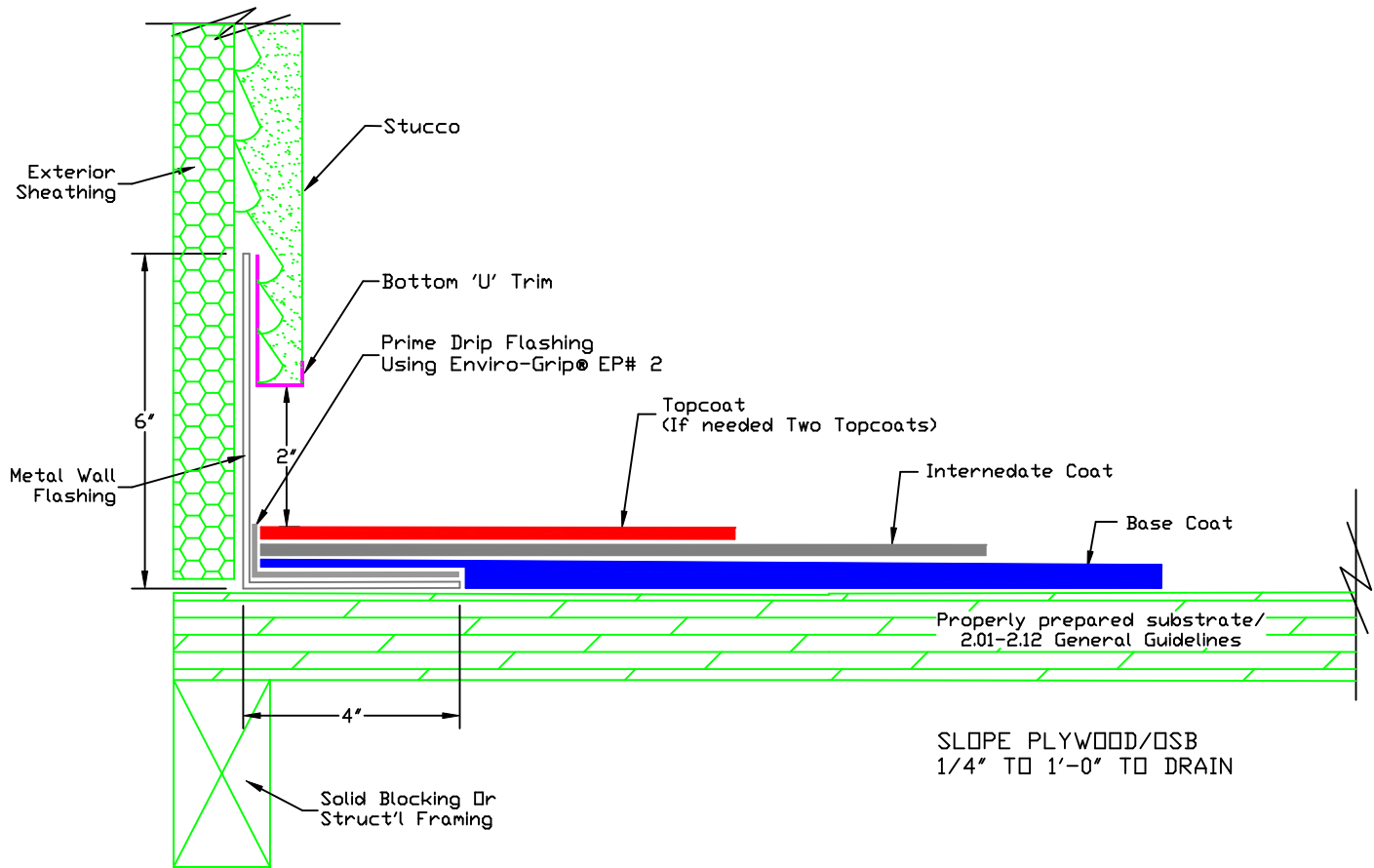
FLEXIDECK™

2250 E. Tropicana Ave
Suite 19-600
Las Vegas, NV 89119

Phone: (866) 977-8833
Fax: (800) 804-0182
Email: sales@polytuffus.com

Web: www.polytuffus.com

*Typical Wall Flashing Detail
for Wood Substrates*



Step	Products	Coverage	Dry Mil
1	Base Coat		
2	Intermediate Coat		
3	Topcoat (if needed Two Topcoat)		

Notes: 1. P-Tuff™ Base Material is a mixture of 4 part P-Tuff™ Classic, SLV, or Flex and 1 part of water by volume.
2. The ICC-ES # and Fire Rating
3. Repair Crack and Joints 2.09-2.12 General Guidelines

NOT TO SCALE