



Leaders in Seamless

WATERPROOFING TECHNOLOGY

POLY-TUFF SYSTEMS INTERNATIONAL

Pedestrian Traffic Deck Systems
Vehicular Traffic Deck Systems
Balconies, Plazas, & Walkways
Green Roof Deck Systems
Below-grade Reinforced Systems
Caulking, Sealants, & Polyureas
Urethane Flooring Systems
Pool Deck Systems
Under Tile Systems

Truly **CRACK-FREE** Decking

LOW-ODOR LOW-VOC Products
Meeting Stringent Regulations

**SINGLE DAY
INSTALL**

**Vehicular Traffic and
Pedestrian Decking
Systems Available**

**Water-Catalyzed
Membranes
with
PATENTED
TDI-FREE
Technology**

**Self-
Leveling
Base
Membranes
SLOPED TO
DRAIN!**



Select Systems are:



ICC Approved



LA City Approved

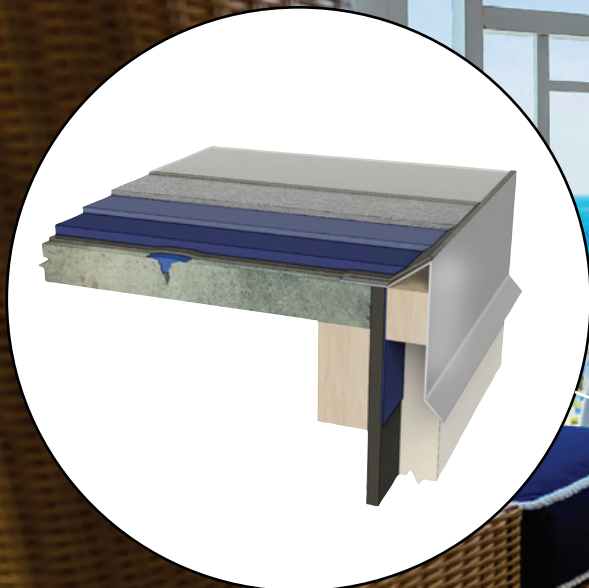


Miami-Dade Approved

CONSTRUCTION COATINGS

Environmentally-Friendly, Water-Curable
Coatings & Waterproofing Systems

Grand Hyatt Baha Mar Resort, Bahamas



Grand Hyatt Baha Mar Resort, Bahamas

FLEXIDECK®

WATERPROOFING DECK SYSTEMS

Flexideck® P-A | Flexideck® P-B | Flexideck® C-WD | Flexideck® P-TW

Select Systems are:



ICC Approved



LA City Approved



Miami-Dade Approved

SYSTEM FEATURES

- Class "A" Fire-Rating on Concrete or Plywood
- Elastomeric
- Fast Curing
- Good Weatherability
- Non-Gassing
- Recoatable
- Seamless

TYPICAL USES

- Balconies
- Over Occupied Space
- Patios
- Roof Decks
- Stairs
- Sun Decks
- Walkways

FEATURED PRODUCTS

PRIMERS

Enviro-Grip® EP#1

A two component, 100% solids, solvent free, epoxy-polyamine primer.

Enviro-Grip® EP#2/EP#2SC

A two component, solvenated, epoxy-polyamine primer (SC low VOC).

BASECOATS

P-Tuff® Classic

A single component, water-catalyzed-base membrane.

TOPCOATS

Topshield® EST-FR/EST-FR (CAL)/EST-FR (SC)

A two component, polyester, aliphatic topcoat for fire-rated decking in three versions (100, 250, 340 VOC).

Topshield® EST/EST (CAL)/EST (SC)

A single-component, polyester, high performance, aliphatic topcoat in three versions (100, 250, 340 VOC).



BELOW GRADE REINFORCED SYSTEM

T-Shield™ WC-100R

SYSTEM FEATURES

Applied at any Required Thickness
Controlled Cure
Economical
Fast Curing
Fast Recoat Times

Fills Ponds & Low Areas
Highly Flexible Over Extreme Temperatures
Labor Saving
Low-Odor
Meets SCAQMD VOC Requirements

Meets the Criteria of VC-836 & E-96
No Heating or Kettles
Non-Gassing
Resistant to Bacterial Growth
User-Friendly

TYPICAL USES

Basements
Between Slabs
Foundation Walls
Green Roof Waterproofing

I.R.M.A. Roofing
Osmosis Barrier Waterproofing
Planters
Promenade Decks

Re-roofing
Terrazzo & Tile Floors
Tunnels
Under Malls & Plazas

FEATURED PRODUCTS

LIQUID MEMBRANE WATERPROOFING

T-Shield™ BG or GC

A single component, liquid applied, black membrane for vertical and horizontal surfaces. For below grade or green concrete.

T-Shield™ BG-100

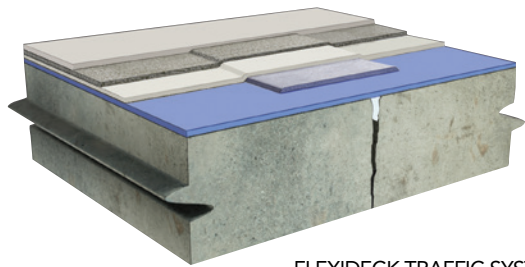
A two component, solvent free, liquid applied, black membrane applied at any thickness.

T-Shield™ WC-100

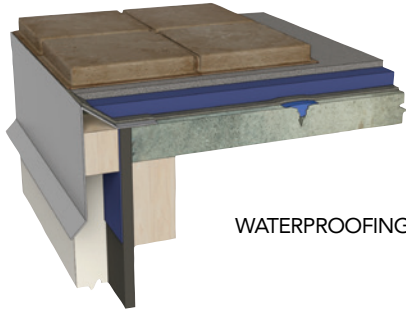
A single component, high solids, water catalyzed, liquid membrane for vertical and horizontal surfaces.

VEHICULAR TRAFFIC DECK SYSTEMS

Flexideck® Standard | Flexideck® P-PD | Flexideck® P-PDR | Flexideck® E-PDR



FLEXIDECK TRAFFIC SYSTEM



WATERPROOFING UNDER TILE

FEATURED PRODUCTS

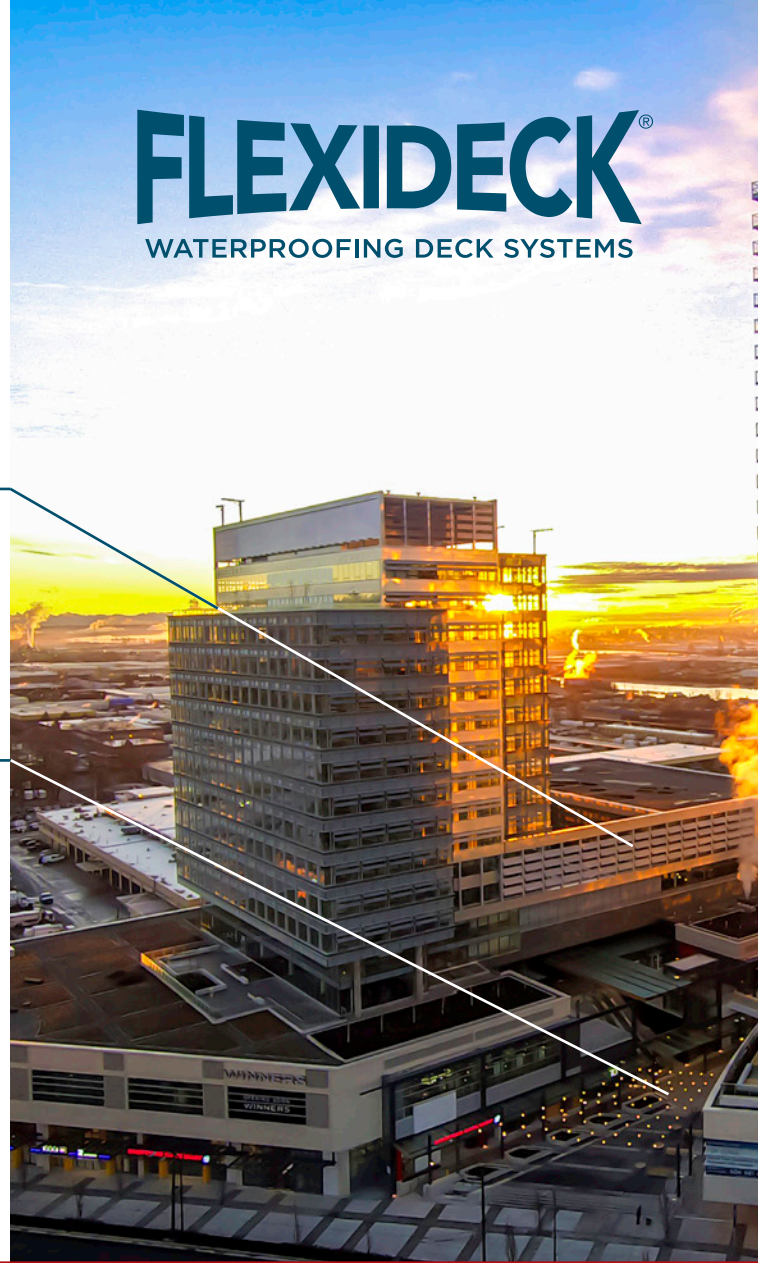
Elastomeric	Fast-Curing	Good Weatherability
Low-Odor	Meets CA, VOC & SCAQMD	
Non-Gassing	Recoatable	Seamless

TYPICAL USES

Concrete Roof Decks	Heavy Traffic Decks	Interior Parking Garages
Mechanical Rooms	Over Occupied Space	Vehicular Traffic Decks

FLEXIDECK®

WATERPROOFING DECK SYSTEMS



FEATURED PRODUCTS

PRIMERS

Enviro-Grip® EP#1
Enviro-Grip® EP#2/EP#2SC
Enviro-Grip® PUR#555

A two component, 100% solids, solvent free, epoxy-polyamine primer.
A two component, solvenated, epoxy polyamine primer (SC low VOC).
A two component, low-odor, intercoat, urethane-polyurea primer.

BASECOATS

P-Tuff® Classic
E-Tuff® 100
E-Tuff® 80
B-Tuff® 302/302SC

A single-component, water-catalyzed base membrane.
A solvent and TDI free, water-catalyzed base membrane with patented technology.
A water-catalyzed solvent and TDI-free base membrane with patented technology.
A single-component, aromatic moisture-cured base membrane.

TOPCOATS

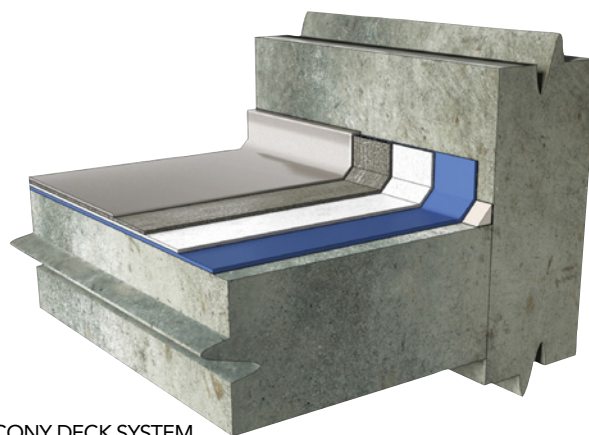
Topshield® 5600
Topshield® 5600EF
Topshield® ALP-150
Topshield® 500
Topshield® 500EF

A two component, 100% solids, solvent free, aliphatic topcoat.
A two component, low odor, high solids, aliphatic topcoat.
A single component, economical, aliphatic topcoat.
A single component, aromatic topcoat.
A single component, aromatic topcoat.



PEDESTRIAN TRAFFIC BALCONY/PLAZA/POOL GREEN ROOF DECK SYSTEMS

Flexideck® Standard | Flexideck® E-WD | Flexideck® P-WD | Flexideck® B-302
Flexideck® B-306 | Flexideck® B-308 | Flexideck® TW-R



BALCONY DECK SYSTEM

FEATURED PRODUCTS

Elastomeric
Non-Gassing
TDI-Free Patented Technology

Fast-Curing
Recoatable

Good Weatherability
Seamless

TYPICAL USES

Balconies
Roof Decks
Walkways

Over Occupied Space
Stairs

Patios
Sun Decks

FEATURED PRODUCTS

Enviro-Grip® EP#1
Enviro-Grip® EP#2/EP#2SC
Enviro-Grip® PUR#555
Enviro-Grip® EBF-LV

A two component, 100% solids, solvent free, epoxy-polyamine primer.
A two component, solvenated, epoxy-polyamine primer (SC low VOC).
A two component, low-odor, intercoat urethane-polyurea primer.
A two component, epoxy-polyamine filler surfacer and primer.

PRIMERS

P-Tuff® Classic
E-Tuff® 100

A single component, water-catalyzed, base membrane.
A single component, solvent and TDI-free, water-catalyzed base membrane with patented technology.

BASECOATS

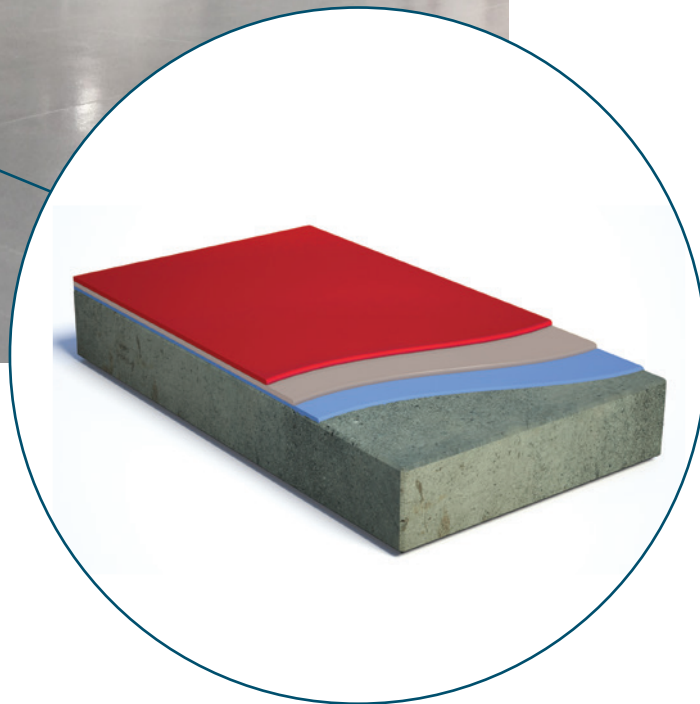
B-Tuff® 302/302SC
B-Tuff® 306
B-Tuff® 308

A single component, aromatic, moisture-cured base membrane.
A two component, solvent-free base membrane.
A two component, fast-setting base membrane.

Topshield® 5600
Topshield® EST
Topshield® ALP-150

A two component, 100% solids, solvent free, aliphatic topcoat.
A two component, polyester, aliphatic topcoat.
A single component, economical, aliphatic topcoat.

TOPCOATS



URETHANE FLOORING SYSTEMS

SYSTEM FEATURES

- Can be Applied to Newly Poured Concrete After 7 Days
- Excellent Impact Resistance
- Extremely High Bonding Strength to Concrete
- Fast Curing with Little to No Odor
- Similar Thermal Expansion to Concrete Unlike Resin Based Epoxies
- Unaffected by Freeze/Thaw
- Wide Temperature Service Range From -50 °F to 200 °F (-45 °C to 93 °C)

TYPICAL USES For uses in food, beverage, pharmaceutical, chemical facilities and more

FEATURED PRODUCTS

PT-Crete U™ 1/8" SL	A light to medium-duty, self-leveling floor system applied at 1/8" to 3/16" and installed over flat substrates.
PT-Crete U™ 1/4" SL	A heavy-duty, self-leveling floor system designed to be installed over flat substrates.
PT-Crete U™ TG	A high-build, maximum-performance, trowel-applied, over flat horizontal surfaces.
PT-Crete U™ SC	Multi-functional, performance coating, applied between 8 to 16 mils.
PT-Crete U™ Cove	A seamless monolithic flooring system perfect for food prep floors with seamless floor to wall transitions.

POLYUREAS

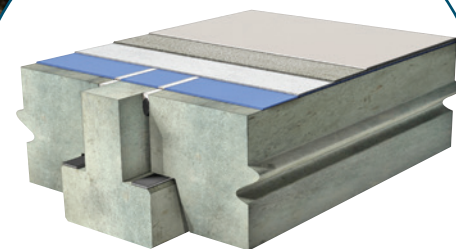
Poly-Tuff Systems International has rapid-curing, 100% solids, flexible, aromatic or aliphatic, seamless, two-component, spray polyurea coating systems for use in secondary waste containment facilities, cold storage facilities, fertilizer plants, mining operations, food processing plants, paper & pulp mills, landfill containment, and other applications.

Our systems are capable of being entirely joint-free (with no exposed joints or cracks) and pond free. They provide waterproofing to concrete or plywood balconies, rooftops, pool decks, and vehicular traffic deck structures.



CAULKING & SEALANTS

Poly-Tuff Systems International manufactures some of the most advanced caulking & sealant formulas in the construction industry.



FEATURED PRODUCTS

P-Tuff® Sealant 50A	A two component, aromatic, 50 shore A caulking compound for interior application.
P-Tuff® Sealant 80A	A two component, aromatic, 80 shore A caulking compound for interior & exterior horizontal applications.
P-Tuff® Sealant 8001	A two component aromatic, thixotropic polyurea, caulking compound for bonding applications.
P-Tuff® Sealant	A two component, gun grade, non-sag, polyurethane joint sealant.
P-Tuff® Sealant HA	A two component, hand applied, self leveling, polyurethane joint sealant.
P-Tuff® Sealant PG	A two component, pourable-grade polyurethane joint sealant.
P-Tuff® Sealant JFR	A two component, jet fuel/chemical resistant polyurethane caulking sealant.
P-Tuff® CR	A two component, aromatic, concrete-repair product and fissure and crack filler.
P-Tuff® CR-SF	A two component, aromatic, solvent-free, concrete-repair product and fissure and crack filler.
P-Tuff® E-101	A single component, high performance, 100% solids joint sealant.
P-Tuff® E-101SL	A single component, self-leveling, 100% solids joint sealant.
P-Tuff® E-102	A single component joint sealant for use in both moving and non-moving joint applications.
P-Tuff® R12R	A water curable, membrane-waterproofing adhesive & coating.
P-Tuff® PF UV	A silicone coated, preformed, expandable foam for vertical and horizontal expansion joints in buildings and parking decks.



POLY-TUFF SYSTEMS INTERNATIONAL

PSI proudly manufactures a new line of Highway and Infrastructure Products:

Cementitious Patching Compounds
Cementitious Grouts/Epoxy Mortars
Surface Treatments/Coatings
Cures and Sealers
Carbon Fiber Reinforcement
Polymer (CFRP) System
Epoxies
Urethanes
Joint Sealants
Admixtures



Select Systems are:



ICC Approved



LA City Approved



Miami-Dade Approved

PSI Headquarters • 8550 W. Desert Inn Rd • Las Vegas, Nevada 89117

(866) 977-8833 • Sales@PolyTuffUS.com • PolyTuffUS.com

Shipping Worldwide

SELECT WATERPROOFING PROJECTS IN THE AMERICAS

USA

Midwest

BSA Hospital: 150,000 sqft - Amarillo, TX
Fort Worth Downtown Square: 100,000 sqft - Fort Worth, TX
OneOK: 150,000 sqft - Tulsa, OK
Powers Court Parking Garage: 92,000 sqft - St. Louis, MO
Pierre LaClede Center: 1,888,775 sqft - St. Louis, MO
West 7th Lofts: 50,000 sqft - Fort Worth TX
Westin Galleria: 44,000 sqft - Houston, TX

Northeast

Arizona Beverage Company: 130,000 sqft - Woodbury, NY
Nickerson Beach Cabana's: 210,000 sqft - Lido Beach, NY
Toyota Dealership: 153,000 sqft - Hampstead, NY
US Naval Base Stadium: 35,000 sqft - Norfolk, VA

Northwest

Quintet Project Apartments: 155,000 sqft - Seattle, WA
Burien Square Apartments: 55,000 sqft - Seattle WA

Southeast

Post Harbor Place Condos: 34,000 sqft - Tampa, FL
Rocky Point Condos: 90,000 sqft - Tampa, FL
Roosevelt Hotel/Waldorf Astoria: 23,000 sqft - New Orleans, LA

Southwest

Ariel Luxury Residence: 82,000 sqft - San Diego, CA
Mission Bay Luxury Condos: San Francisco, CA
Pacific Electric Lofts: Los Angeles, CA
Park + Market Apartments - San Diego, CA
Pinnacle at The Park: 267,200 sqft - San Diego, CA
Queen Mary Ship: 60,000 sqft - Long Beach, CA
The Madrone Luxury Condos: 325,000 sqft - San Francisco, CA
U.C. Santa Barbara: 60,000 sqft - Santa Barbara, CA
US Naval Base Logistic Center: 32,000 sqft - Honolulu, HI

CANADA

King George Station: 145,000 sqft - Vancouver, BC
Marine Gateway: 350,000 sqft - Vancouver, BC
Medical Processing Facility: 1,000,000 - Edmonton, AB
Silver: 95,000 sqft - Burnaby, BC
The Guardian Luxury Apartments: 284,000 sqft - Calgary, AB
The Metropolitan Hotel: 105,800 sqft - Vancouver, BC

CARIBBEAN

Bahamas:

Baha Mar: 150,000 sqft - Nassau, Bahamas

Costa Rica:

Aeropuerto: 90,000 sqft - Juan Santa Maria, Costa Rica
Banco Central of Costa Rica: San Jose, Costa Rico
Plaza Tempo: 40,000 sqft - Juan Santa Maria, Costa Rica
Real Inter Continental Hotel : 75,000 sqft - San Jose, Costa Rica

Dominican Republic:

La Sirena Super Mercado: 136,000 sqft - Dominican Republic

Puerto Rico:

Puerto Rico Supply: 24,000 sqft - Puerto Rico

LATIN AMERICA

El Salvador:

Fairfield Marriott: 45,000 sqft - El Salvador
Plaza Suiza: 30,000 sqft - El Salvador

Honduras:

Banco Nacional: 120,000 sqft - Honduras

Mexico:

La Marina Mall: 45,000 sqft - Colima, Mexico

Panama:

Banco Pichincha: 30,000 sqft - Panama